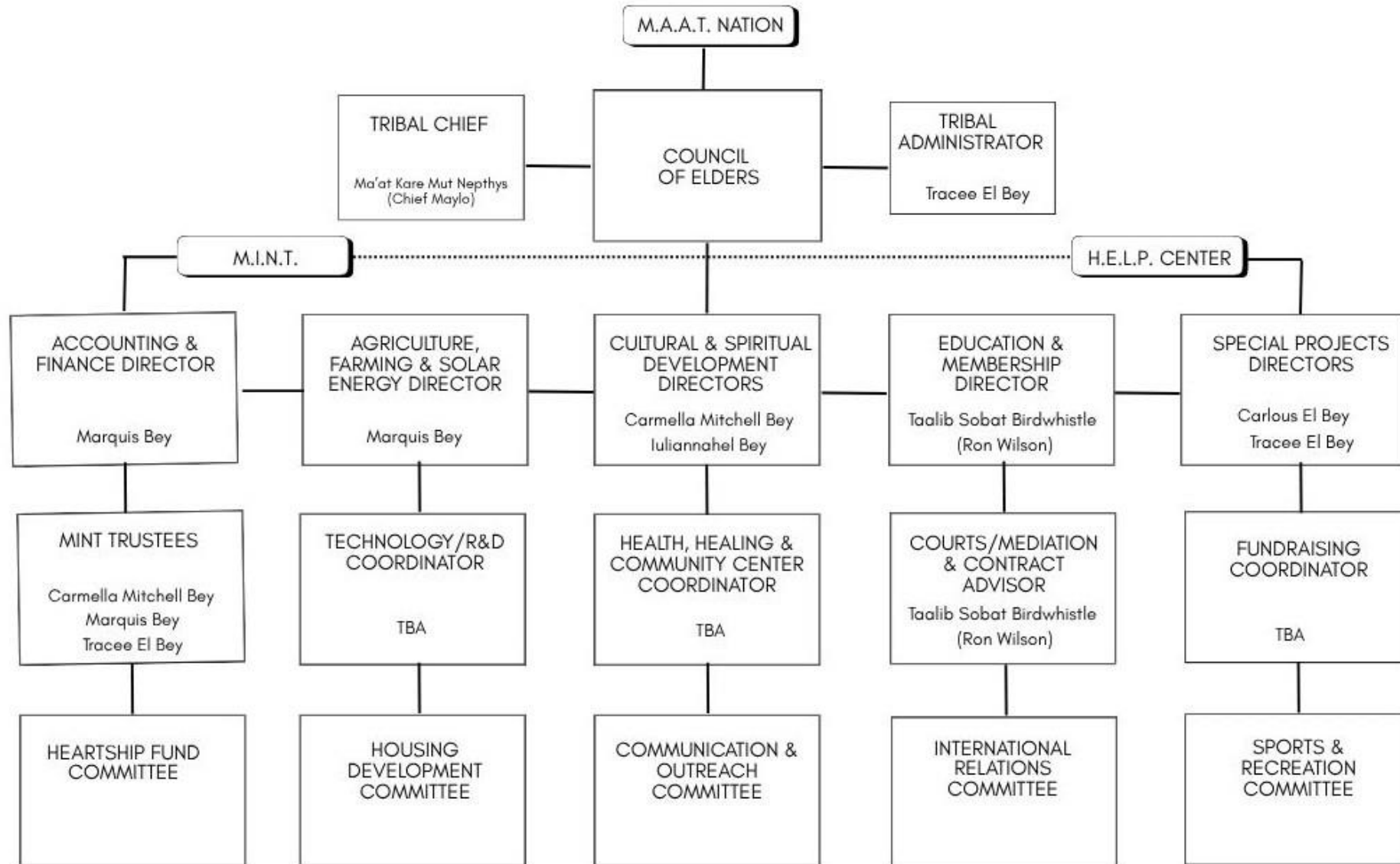


MAAT Nation

Tribal Organization Chart & Transitional Leadership

*healing the planet
with many voices
one rhythm
one heartbeat.*

TRIBAL ORGANIZATIONAL STRUCTURE



Council of Elders/Directors (By “eldership”)

Carmella Mitchell Bey

Cultural & Spiritual Development
Director



Iuliannahel Bey

Cultural & Spiritual
Development Director



Carlous El Bey

Special Projects Director



Marquis Bey

Accounting & Finance;
Agriculture, Farming & Solar
Energy Director



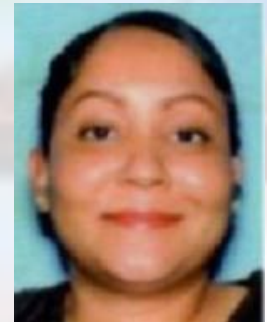
Ron Wilson

Education & Membership Director



Tracee El Bey

Special Projects Director



Ancestral Governorship (as of May 2026)

Theodore Scott Mitchell Bey

(October 9)

(Carmella's husband)



Mablelean Rushing

(November 24)

(Chief Maylo's mother)



Director Contact List



Ma'at American Aborigine Tribal Nation
P.O. Box 6846, Yuma, AZ 85366
Email: admin@maatribalnation.org Phone: 928-851-7822



Department/Director Contact List

Department	Director	Email	Location
Accounting & Finance	Marquis Bey	marquis@maatribalnation.org	Arizona
Agriculture, Solar & Farming	Marquis Bey	marquis@maatribalnation.org	Arizona
Cultural & Spiritual	Carmella Denise Mitchell Bey	carmella@maatribalnation.org	Ohio
Cultural & Spiritual	Julianahel Bey	julianah@maatribalnation.org	Ontario Canada
Education	Taalib Sobat Birdwhistle (Ron Wilson)	ronwilson@maatribalnation.org	Arizona
Membership	Taalib Sobat Birdwhistle (Ron Wilson)	ronwilson@maatribalnation.org	Arizona
Special Projects	Carlous Elliott Bey	carlous@maatribalnation.org	Ontario Canada
Special Projects	Tracee El Bey	tracee@maatribalnation.org	Arizona

Key Steps To Leadership Transition

- 1) Preparation & Planning
- 2) Transitional Training
- 3) Identifying & Accessing Necessary Tools

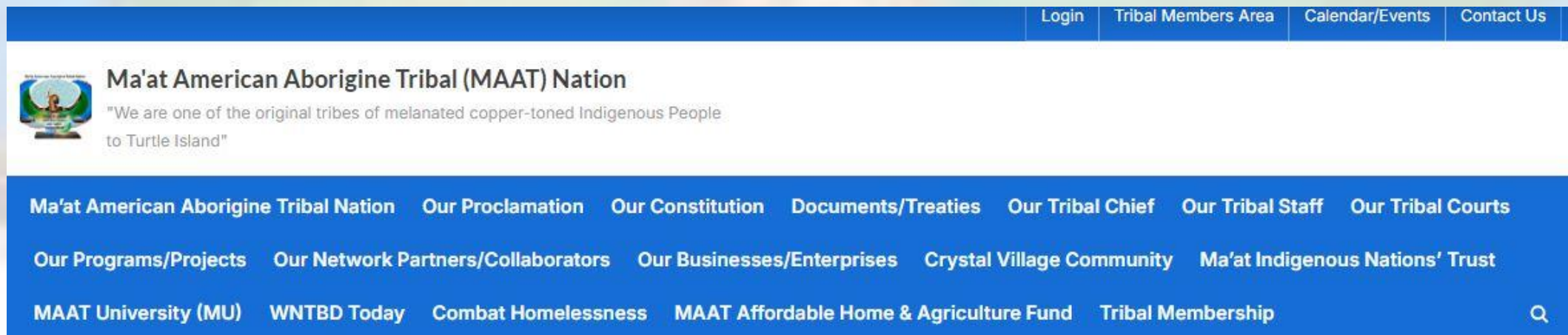
Estimated Completion: January, 2027

*healing the planet
with many voices
one rhythm
one heartbeat.*

Our Websites

[MAAT Nation – www.maatribalnation.org](http://www.maatribalnation.org)

- contains info, links, and documents about us, our staff, our projects, and our network partners
- must create free account to access all pages
- Also contains tribal members- only area



The screenshot shows the top portion of the MAAT Nation website. At the top right, there is a blue navigation bar with white text links: "Login", "Tribal Members Area", "Calendar/Events", and "Contact Us". Below this is a white header area featuring the MAAT Nation logo on the left, which depicts a person in traditional dress. To the right of the logo, the text reads "Ma'at American Aborigine Tribal (MAAT) Nation" followed by the tagline "We are one of the original tribes of melanated copper-toned Indigenous People to Turtle Island". Below the header is a blue navigation bar with white text links: "Ma'at American Aborigine Tribal Nation", "Our Proclamation", "Our Constitution", "Documents/Treaties", "Our Tribal Chief", "Our Tribal Staff", "Our Tribal Courts", "Our Programs/Projects", "Our Network Partners/Collaborators", "Our Businesses/Enterprises", "Crystal Village Community", "Ma'at Indigenous Nations' Trust", "MAAT University (MU)", "WNTBD Today", "Combat Homelessness", "MAAT Affordable Home & Agriculture Fund", and "Tribal Membership". A search icon is located at the bottom right of this bar.

Our Websites

[MAAT Crystal Village Community \(CVC\) – www.maatcrystalvillage.com](http://www.maatcrystalvillage.com)

- contains info, links, documents, and presentations regarding the CVC
- Contains info, links, documents, and videos for the Time & Energy Exchange (CVEX) System
- free membership for limited site access;
- \$45 one-time lifetime donation for full access (used for fund-raising)



The screenshot shows the top section of the website. At the top, there is a dark grey bar with contact information: an email icon followed by 'cvex@maatcrystalvillage.com', a phone icon followed by '9288517822', and social media icons for X, Facebook, YouTube, and Instagram. Below this is a green navigation bar. On the left side of the green bar, there is a small landscape image, followed by the text 'MAAT Crystal Village Community' in a large, bold, white font, and 'MAAT Crystal Village Community Exchange & Network' in a smaller white font below it. To the right of the logo, there is a grid of white navigation links: 'Home', 'Login', 'Crystal Village – True Living', 'Learning To Live Without Money', 'CVC Time & Energy Exchange', 'CVEX Information', 'FAQs', 'CVEX Terms & Conditions', 'CES Links & Resources', 'Install CES Mobile App', 'Terms & Conditions (Non-Site-Members)', 'Join CVEX (Non-Site-Members)', '"No More Dependence On Money" Webinar', 'Cultural & Spiritual Education', 'Let's Build Affordable Homes', 'Chief Maylo's Videos', and 'Contact Us'.

Our Websites

[MAAT University – www.maatuniversity.org](http://www.maatuniversity.org)

- Education and book publishing site
- Offers copyright, ISBN's, and book publishing for prospective authors
- Offers free books
- Link to cultural and spiritual education (Kamitic Legacy)



MAAT University

Home Books/Courses Product Categories My Account MU Educators
Teachers Coffee Break Published Authors Get Published Copyright Services
Get Free Books Help Build & Educate Education For Survival Privacy Policy
Contact Us



Our Websites

[WNTBD Today – www.wntbdtoday.com](http://www.wntbdtoday.com)

- WNTBD stands for “What Needs To Be Done Today”
- This is our podcast (video and audio) site
- Contains info, posts, and links to our [YouTube Channel](#) (@maatribalnation)



WNTBD Today

Listen, Learn, Live	“What Needs To Be Done” Today Theme Song	Watch/Listen On YouTube
		
RSS Feed (Audios)	The Mythologies Of Money	Community Exchange System
Combat Homelessness	Man With Dominion	Dedication To All Matriarchs
Kamitic Legacy Teaching		

Our Websites – In Development

[MAAT Nation Magazine – www.momzine.org](http://www.momzine.org)

- Created for members, network partners, and guest authors to present their ideas, suggestions, rants or raves, and other concerns in the form of editorials
- Will contain various local, regional, national, and global news and posts

⚡ Trending Now



MAAT Nation Magazine

Informative, creative, cultural, and spiritual articles and videos

Our Websites – In Development

[Geri Lorraine Enterprises, LLC – www.gerilorraine.com](http://www.gerilorraine.com)

- Geri Lorraine is the financial managing company for The M.I.N.T.
- It encompasses the M.I.N.T. Unincorporated CID (Common Interest Development)
- Funding will be secured from the H.E.L.P. Center and then distributed to The M.I.N.T.
- The M.I.N.T. CID will be responsible for the development of investment homes, solar, and agricultural projects

📍 P.O. Box 6846, Yuma, AZ 85366 ✉ support@gerilorraine.com 📞 +1-928-851-7822 🕒 Hours: Mon to Fri, 8am - 4pm

**Geri Lorraine Enterprises
LLC**



[Home](#) [About](#) [Services](#) [Shop](#)

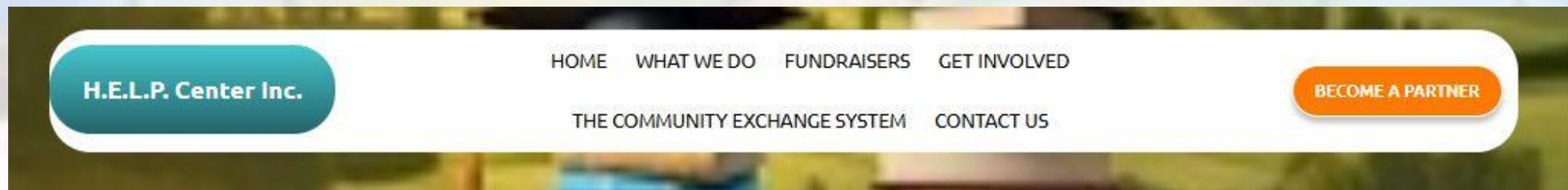
[Blog](#)

[Request A
Quote](#)

H.E.L.P. Center Inc. Website

[H.E.L.P. Center Inc. – www.h-e-l-p-center.org](http://www.h-e-l-p-center.org)

- This is the main website for our partner, Heritage Education Land Prosperity (H.E.L.P.) Center Inc.
- Contains info and links about the organization, its Board of Directors, and its network partners
- Contains links to H.E.L.P. Center services, volunteers, and donation portals



Available Utilities & Tools

Account or Utility/Tool	MAAT Nation M.I.N.T. Geri Lorraine	H.E.L.P. Center	Account or Utility/Tool	MAAT Nation M.I.N.T. Geri Lorraine	H.E.L.P. Center
Calendly.com	✓	✓	YouTube	✓	✓
Monday.com	✓	✓	Yuma Chamber of Commerce	✓	✓
Facebook	✓	✓	Telegram	✓	✓
Freeconferencecall.com	✓	✓	Signal	✓	✓
Instagram	✓	✓	Techsoup		✓
RSS.com	✓	✓	Eventbrite		✓
Twitter (X)	✓	✓	Bowker ISBNs (23 left)	✓	
Zoom (40 mins)	✓	✓	CVEX (Crystal Village Exchange)	✓	✓
Google Meet	✓	✓	Arizona Procurement		✓
Google Drive	✓	✓	Etherscan (MetaMask) - Tokens	✓	
WebEx	✓	✓	Google for Nonprofits		✓
Amazon Prime	✓	✓	Riverside.fm (free version)	✓	
Canva	✓	✓	U.N.I.A. (United Nations of Indigenous Aborigines) Community	✓	
Microsoft 365 for Business	✓	✓			
Microsoft Teams	✓	✓			